



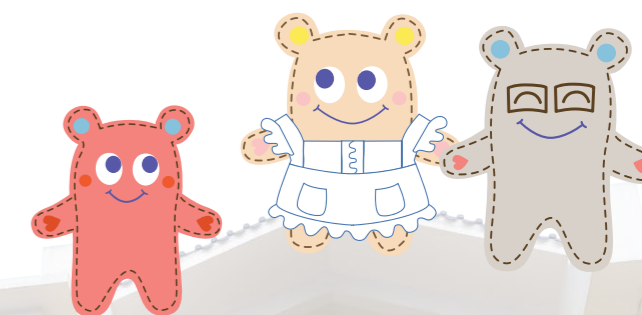
超越逆境 · 邁向未來 Strength in Adversity Progress in Action



目錄 CONTENTS



主席分享 Chairperson's Message	02	善行之舉：義工服務 Acts of Kindness: Volunteer Heroes	17
總幹事報告 Executive Director's Report	03	新觀塘家舍的進程與展望 Progress & Prospect: Our New Kwun Tong House	21
董事會 Board of Directors	04	不可或缺的支持 INVALUABLE SUPPORT	
香港麥當勞叔叔之家慈善基金 RMHC Hong Kong	05	創始使命伙伴 — 麥當勞 Founding Mission Partner — McDonald's	24
麥當勞叔叔之家慈善基金 Ronald McDonald House Charities	07	感謝各方支持 Acknowledgment of Support	25
願景與使命 VISION & MISSION		財務資料 FINANCIAL INFORMATION	
我們的服務與成效 Our Services & Impact	09	財務資料 Financial Information	29
研究調查 Survey Findings	12	支持我們 Support Us	32
家舍故事 The Story of Our Family	14		
結合傳統與創新的籌款活動 Maintaining Stability and Continuity: Fundraising Events	15		



主席分享

CHAIRPERSON'S MESSAGE



回顧2022年度，我們很難忽視COVID-19疫症持續對我們的生活和生計產生的深遠影響。今年是這場全球危機爆發以來的第三年，儘管情況看似有所好轉，迎面而來的還是前所未有的挑戰和困難。

在這場持續不斷的抗疫戰中，香港麥當勞叔叔之家慈善基金對履行服務承諾的信念堅定不移，致力給予病童家庭適切的支援，為他們提供「家以外的家」——一個安全又衛生的臨時居所。

在保障入住沙田家舍的家庭、義工和員工的健康和安全之際，香港麥當勞叔叔之家慈善基金在實現建立第二家舍的願景方面亦取得重大進展。隨著觀塘家舍的建設落成，我們正著手進行室內佈置和運營規劃，以及擴充團隊和培訓，以確保新家舍能於2023年第四季度開始提供服務。

自香港首間專科兒童醫院於2018年啟用，我們預計支援服務將出現很大需求。有見及此，我們在十多年前構思在香港兒童醫院附近建立第二家舍，為醫院接受治療的病童家庭提供支援，以回應日益增長的服務需求。這座16層樓高的新家舍設有66間客房，每年能提供2萬4千晚住宿服務予有需要的病童家庭。加上沙田首間家舍現正營運的23間客房，我們的服務範圍將擴展至觀塘區內的其他醫院。

如沒有善長的鼎力支持，以及無私的義工和員工的貢獻和不遺餘力的付出，這些成就都不可能實現。他們慷慨的施予、助人的熱誠和不懈的努力，對推動香港麥當勞叔叔之家慈善基金的發展有著重要作用。我衷心感謝他們每位堅守對服務病童家庭的承諾。

展望未來，我們認為前路仍充滿挑戰，然而在你們的持續支持下，我相信我們能夠克服這些困難。在此，我再次向所有善長、合作夥伴、義工、支持者及員工致以最深切的感謝，感謝你們堅持相信我們的使命，與我們共同創建一個關愛的社區，讓患病兒童在家人和關懷下，得到康復和茁壯成長的機會。

我誠邀各位細閱這份年度報告，見證我們共同取得的成果，讓我們重申對服務的承諾，攜手為患病兒童及其家庭建設一個更健康美好的未來。

As we reflect on the year 2022, it is impossible to overlook the profound impact that the COVID-19 pandemic continued to have on our lives and livelihoods. This year marked the third year since the onset of this global crisis, although things seemed to be looking up, the challenges and hardships presented to us were unprecedented.

Throughout this ongoing battle against the pandemic, RMHC Hong Kong nonetheless has remained steadfast in our commitment to addressing the needs of families with sick children by providing a safe and hygienic shelter — a "home-away-from-home" for them.

While continuing to prioritize the health and safety of our families staying at the Shatin House, volunteers, and staff, RMHC Hong Kong made significant progress toward realizing our vision of establishing the second House. After construction of the new Kwun Tong building was completed, we moved forward with furnishing the interior as well as finalizing all the plans for staffing and training for our new premises, to ensure we will begin delivering our services in Q4 of 2023.

The conceptualization, over 10 years ago, to build a second House near Hong Kong's first and only specialist hospital for children, was a call to action to support families whose children are receiving treatment at that hospital. We anticipated there will be a growing need for our services after the Hong Kong Children's Hospital opened in 2018. The 16-storey new House that comprises 66 rooms will enable us to provide 24,000 nights of accommodation for families with sick children each year. In addition to the existing 23 rooms operating in our first House in Sha Tin, our services will be extended to other hospitals nearby in Kwun Tong area as well.

None of these accomplishments would have been possible without our supportive donors, and the dedication and hard work of our volunteers and staff. Together, their generous giving, passion and tireless efforts have been instrumental in driving RMHC Hong Kong forward. I extend my heartfelt appreciation to each and every one of them for their unwavering commitment.

As we look to the future, we recognize that there are still immense challenges ahead. However, with your continued support, I am confident that we can overcome them. Once again, I express my deepest gratitude to all our donors, partners, volunteers, supporters and staff for their unwavering belief in our mission. Together, we can create a community where sick children have the opportunity to recover and thrive surrounded by the love and care of their families.

I invite you to delve into the pages of this annual report and witness the impact we have collectively achieved. Let us celebrate our successes and renew our commitment to the mission we serve. With your support, we can build a brighter and healthier future for the children and their families.

黃馮慧芷女士 Ms. Grace Fung Oei

全球麥當勞叔叔之家慈善基金董事會委員
RMHC Global Board of Trustees
香港麥當勞叔叔之家慈善基金董事會主席
RMHC Hong Kong Chairperson



總幹事報告

EXECUTIVE DIRECTOR'S REPORT

雖然經歷新冠肺炎帶來前所未有的挑戰，我們仍懷著感恩和樂觀的心，向大家闡述這份總幹事報告。儘管困難重重，我們依然堅守信念，為我們從逆境中走過來，竭盡所能履行服務承諾而感到非常自豪。

當小朋友患病時，整個家庭都飽受痛苦，尤其是父母。在香港麥當勞叔叔之家慈善基金服務的26年裡，我很榮幸能促使香港麥當勞叔叔之家慈善基金成為香港「以家庭為本」服務提供者的先鋒，並以支援醫院為目標，幫助住院兒童及其家庭在艱難時期舒緩壓力及緩解經濟負擔。

患病兒童的家庭經常面對健康風險增加、醫療系統不勝負荷而引致服務中斷、經濟壓力和情緒影響等問題。就此，我們對患重症兒童的父母進行了關於親職壓力及社會支援的調查。調查顯示，超過 50% 的受訪者表示希望在醫院附近設有臨時住宿服務；逾60%的病童父母在照顧患病中的小孩時感受到壓力；另外，逾80%的受訪者至少遇過一種精神或情緒問題。

這些數字顯示患病兒童的家庭對我們的服務有很大的需求，故此，位於觀塘的第二所麥當勞叔叔之家將填補這些缺口，並照顧更多的需求。在這過程中，我們希望擴展服務至更廣泛的社區，新措施包括為我們的伙伴醫院內的非家舍兒童病者提供「日間活動」服務，使更多有需要的病童家庭受惠。

新冠肺炎確實嚴重影響我們在各方面的工作，然而我們專心致志實踐基金的使命，堅持為患病兒童的家庭提供基本需要。在義工服務和麥當勞叔叔之家的參觀活動暫停期間，但我們邀請義工以視像方式與我們的孩子互動，讓他們保持學習和維持社交生活。

為此，我很感恩我的優秀團隊與我一起克服所有挑戰。在我們即將展開新的旅程之時，很高興看到第二所麥當勞叔叔之家將於2023年第四季度竣工。這個是我在16年前向我們基金會的創始人伍日照博士和董事會提議的目標計劃，現在終於成真了！

同樣重要的是，我衷心感謝主席黃馮慧芷女士的領導、董事會的引領，以及許多在這實現夢想的道路上支持過我的人，因為他們無私付出與貢獻，成就了今天的成果。

最後，衷心感謝我們的捐助者、合作夥伴、義工和支持者對我們的無比信任，使我們能夠繼續對社區發揮重大的正面影響。

黃婷婷女士 Ms. Iris Wong

香港麥當勞叔叔之家
慈善基金總幹事
RMHC Hong Kong
Executive Director



In the face of unrivaled challenges brought about by COVID-19, I am filled with a sense of optimism and gratitude as I present to you the Executive Director's report. Despite the difficulties we have encountered, we stood firm in our commitment, and it is with great pride that I reflect on how we have risen above adversity and continued our vital work.

When a child is sick, the entire family feels the pain, especially the parents. In my 26 years of service at RMHC Hong Kong, it's my honor to facilitate and enable RMHC Hong Kong as the pioneer of "Family-centered care" provider in Hong Kong, purposely serving as an "extended arm of hospital" to help families with hospitalized children to release stress and financial burden during their difficult time in life.

The increased health risk, disruption of healthcare services, financial strain, and emotional impact are some of the issues facing families with sick children. Because of this, we surveyed parents with severely ill children on parental stress and their social support. The survey revealed that over 50% of the respondents looked for temporary residential services in neighboring hospitals; more than 60% felt stressed when taking care of their sick children; and over 80% of them encountered at least one mental problem.

These figures indicated a great demand for our services, thus, the realization of the second House in Kwun Tong will fill the gaps and meet more needs. Along the pipeline, we hope to extend our service to a wider community, new initiatives such as the "Day Pass Program" will be introduced for pediatric patients of our partner hospitals who are not residents of our House, to benefit more families in need under our mission.

The magnitude of the impact of COVID-19 has been immense affecting various aspects of our work. But we have been devoted to focusing on our missions, with measures such as providing our families with basic needs implemented. While visits to our House or voluntary work have been suspended, we invited volunteers to engage our children virtually, keeping their learning and social life active.

To this end, I am pleased to have a team to work hand in glove with and support me to overcome all these challenges. As we embark on the new journey, I am excited to see the completion of the second House which will open in Q4 of 2023. It is a mission possible which I proposed to our founder Dr. Daniel Ng and the Board of Directors 16 years ago.

Just as importantly, I want to express my appreciation to our Chairperson Grace for her leadership to the board, as well as the guidance of our board and many supporters along the road to making our dream come true.

Finally, the unwavering belief of our donors, partners, volunteers, and supporters in our mission allows us to continue making a significant impact on the community. We are always grateful for that.



黃馮慧芷女士
Ms. Grace Fung Oei
董事會主席
Chairperson



黃福霖先生
Mr. Raymond Wong
Fook Lam
董事會成員及司庫
Director & Treasurer



陳志峯教授
Prof. Godfrey Chan
Chi Fung
董事會成員
Director



張添瑛小姐
Ms. Karen Cheung
Tih Loh
董事會成員
Director



周敏小姐
Ms. Alice Chow Ming
董事會成員
Director



黎韋詩小姐
Ms. Randy Lai
Wai Sze
董事會成員
Director



何翠萍小姐
Mrs. Michelle Ho Pura
董事會成員
Director



蔡靖民先生
Mr. Ian Choy Jing Man
董事會成員
Director



尹巧儀小姐
Ms. Jennifer Wan
How Yee
董事會成員
Director



李民瞻教授
Prof. Albert Martin
Li Man Chim
董事會成員
Director



衛紹宗先生
Mr. Dominic Wai
Siu Chung
董事會成員
Director

香港麥當勞叔叔之家慈善基金
RMHC HONG KONG

關於麥當勞叔叔之家慈善基金

麥當勞叔叔之家慈善基金 (RMHC) 的使命是創建、尋找和支持可直接改善兒童及其家人健康和福祉的計劃。

RMHC資助的三大核心計劃，包括「麥當勞叔叔之家」(家舍)、「麥當勞叔叔之家家庭休息室」(家庭休息室)及「麥當勞叔叔之家流動醫療車」(流動醫療車)。截至2022年，於全球62個國家及地區設有380所家舍、265間家庭休息室及40輛流動醫療車，為有需要的患病兒童及其家庭提供關懷適切的服務。

關於香港麥當勞叔叔之家慈善基金 (RMHC Hong Kong)

由香港麥當勞叔叔之家慈善基金設立的香港麥當勞叔叔之家於1996年啟用，毗鄰沙田威爾斯親王醫院，是亞洲區內首間投入服務的家舍，為患重病兒童及其家人提供「家以外的家」服務，讓他們在抗病路上維繫在一起，同時得到妥善的關懷和支持。



RONALD McDONALD HOUSE CHARITIES (RMHC)

RMHC's mission is to create, find, and support programs that directly improve the health and well-being of children and their families while children receive hospital treatment.

There are three core programs that we offer: Ronald McDonald House (RMH), Ronald McDonald Family Room (RMFR), and Ronald McDonald Care Mobile (RMCM). As of 2022, there are more than 380 RMHs, 265 RMFRs, and 40 RMCMs in 62 countries and regions across the globe providing services to those in need.

RMHC HONG KONG

Under the auspices of RMHC Hong Kong, an RMH was set up in Shatin near the Prince of Wales Hospital in 1996 as the first RMH program in Asia to provide a "home-away-from-home" for sick children and their families, enabling them to be close to each other and to the care and resources they need.



1996年，亞洲首間麥當勞叔叔之家
在香港成立
Asia's first RMH in Hong Kong
was established in 1996

香港麥當勞叔叔之家慈善基金 RMHC HONG KONG



這所「家以外的家」，是位於沙田的香港麥當勞叔叔之家，設有23間客房，其中一間為隔離套房，以及公共廚房、圖書館、學習室、遊戲區、公共飯廳和有機花園等設施。家舍位置鄰近醫院，不僅是臨時的住所，更給予入住的家庭關懷、支援和物資。自成立以來，家舍為逾8,600個病童家庭提供逾226,000晚住宿。

設於觀塘並毗鄰香港兒童醫院的第二家舍將於2023年投入服務，設有66間客房（包括六間附特別設施的房間），每年為病童家庭提供24,000晚住宿。觀塘第二家舍的落成及啟用，印證我們致力改善病童家庭的健康和福祉的承諾。作為香港推動「以家庭為本」服務理念的先鋒，能夠為有需要的家庭提供舒適的臨時家園，我們為此感到萬分的榮幸。

香港麥當勞叔叔之家慈善基金是政府註冊非牟利機構，根據《稅務條例》88條獲豁免繳稅，由獨立董事會監管營運，所有服務經費均由籌募工作及各界捐助而來，並用作維持及擴展服務。

麥當勞叔叔之家（觀塘）賽馬會大樓預計於2023年投入服務
RMHC (Kwun Tong House) Jockey Club Building is expected to commence service in 2023



At this "home-away-from-home", there are 23 family bedrooms, including an isolation suite, as well as a communal kitchen, library, study room, play area, communal dining area, and an organic garden. More than just offering a room to stay in, RMH also provides comfort, support, and resources for families with seriously sick children, all located just steps from the hospital. Since its establishment, more than 226,000 nights have been provided for over 8,600 sick children and their families.

The second RMH in Kwun Tong, will open in 2023, near the Hong Kong Children's Hospital comprising 66 rooms, of which six are special-needs rooms. It will provide an additional 24,000 nights to families with sick children each year. The realization of the new House in Kwun Tong reinstates our commitment to meeting their needs. We are both touched and privileged to have provided a place of solace when it was most needed, together with the family-centered care that is totally unique in Hong Kong.

RMHC Hong Kong is an independent NGO registered under Section 88 of the Hong Kong Inland Revenue Ordinance and governed by an independent Board of Directors. We rely on the support and donations from all walks of life to sustain and expand our services.



麥當勞叔叔之家慈善基金 RONALD McDONALD HOUSE CHARITIES

「麥當勞叔叔之家慈善基金」的起源

「麥當勞叔叔之家慈善基金」40多年來提倡「以家庭為本」的服務理念始於美國費城，當時費城老鷹隊的邊鋒Fred Hill的三歲女兒Fred Hill於1974年被診斷出患有白血病，需送院接受治療。

Fred與妻子Fran因不願把女兒獨留在醫院，無奈地以醫院為家，方便照顧女兒。他眼見不少父母跟他們一樣，需要長途跋涉把患病的孩子送往醫院接受治療，卻又因負擔不起酒店高昂的收費，於是要以醫院為家。

Fred認為必須要想個辦法改變這種狀況，於是他發起募捐活動，為這些跟他們一樣因子女患重病而經歷身心與經濟創傷的家庭籌集資金。Fred向費城老鷹隊總經理Jim Murray、球隊老闆Leonard Tose及麥當勞區域經理Ed Rensi 尋求協助，合力完成費城兒童醫院兒童腫瘤科主任Dr. Audrey Evans的夢想，籌辦一所臨時家園，為入住醫院的病患兒童的家庭提供「家以外的家」。當時費城的麥當勞餐廳老闆／經營者為表支持，把售賣薄荷奶昔的收益撥捐這項措舉，因此第一所「麥當勞叔叔之家」也就誕生了。

時至今日，麥當勞叔叔之家慈善基金的足跡遍佈世界各地，於全球62個國家設有逾380個分會，以創建、尋找和支持直接改善兒童健康和福祉的計劃為使命，同時為患病兒童的家庭提供援助。



麥當勞叔叔之家慈善基金成立
The founding of RMHC

The Story of Ronald McDonald House Charities

The over four-decade journey of advocating "Family-centered care" of Ronald McDonald House Charities began in 1974 in Philadelphia, USA when Kim Hill, the three-year-old daughter of Philadelphia Eagles tight-end Fred Hill, was diagnosed with leukemia.

Unwilling to leave their child, Fred and his wife Fran stayed with their daughter in the hospital during the entire treatment. They saw other parents had done the same of traveling great distances to bring their children to the medical facility, but the high cost of hotel rooms was prohibitive.

Fred thought something had to be done. He garnered help from the Philadelphia Eagles general manager Jim Murray, owner Leonard Tose, and the McDonald's regional manager Ed Rensi to support Dr. Audrey Evans, head of the pediatric oncology unit at Children's Hospital of Philadelphia, to fulfill her dream of building a house that could serve as a temporary residence – a "home-away-from-home" for families of children being treated at her hospital. At that time, McDonald's owner/operators in Philadelphia donated proceeds from the sale of Shamrock Shakes to support this cause, which led to the first Ronald McDonald House.

Today, RMHC has grown to over 380 chapters in 62 countries worldwide, spreading its footprint across the world with a mission to create, find, and support programs that directly improve the health and well-being of children and their families while children receive hospital treatment.



Kim Hill與Fred Hill
Kim Hill and Fred Hill



年幼時的Kim Hill
The young Kim Hill

懷念Dr. Audrey Evans的畢生貢獻 Remembering Dr. Audrey Evans' legacy

麥當勞叔叔之家慈善基金的聯合創始人Dr. Audrey Evans於2022年9月29日在家中安詳辭世。作為一位具遠見並致力倡導「以家庭為本」的先鋒，Dr. Audrey Evans以照顧患病的兒童及其家人為使命。她的畢生貢獻將永遠留存，我們很感謝她為世界帶來美好的改變。

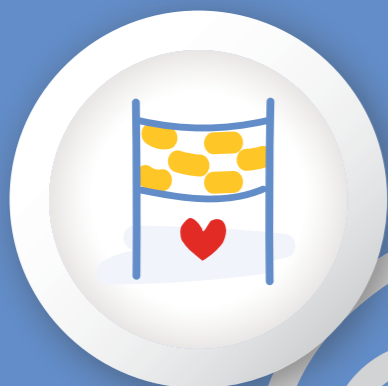
The co-founder of Ronald McDonald House Charities, Dr. Audrey Evans passed peacefully in her home on 29 September 2022. As a visionary and pioneer committed to advocating for "Family-centered care", Dr. Evans found her true calling in caring for sick children and their families. Her lasting legacy will live on, and we are all grateful to her for changing the world.



攝影：Rebecca Barger
Photography: Rebecca Barger

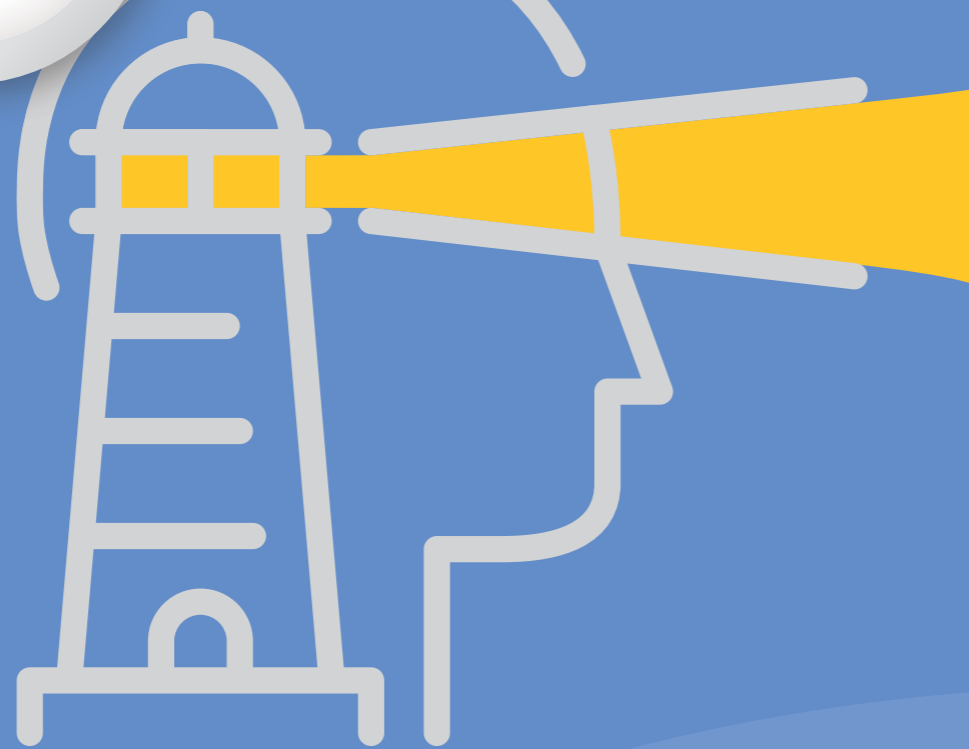
願景與使命

VISION & MISSION



以國際視野照顧本地需要，為小孩及他們的家庭提供資源。

Thinking globally, acting locally to provide resources for children and their families.



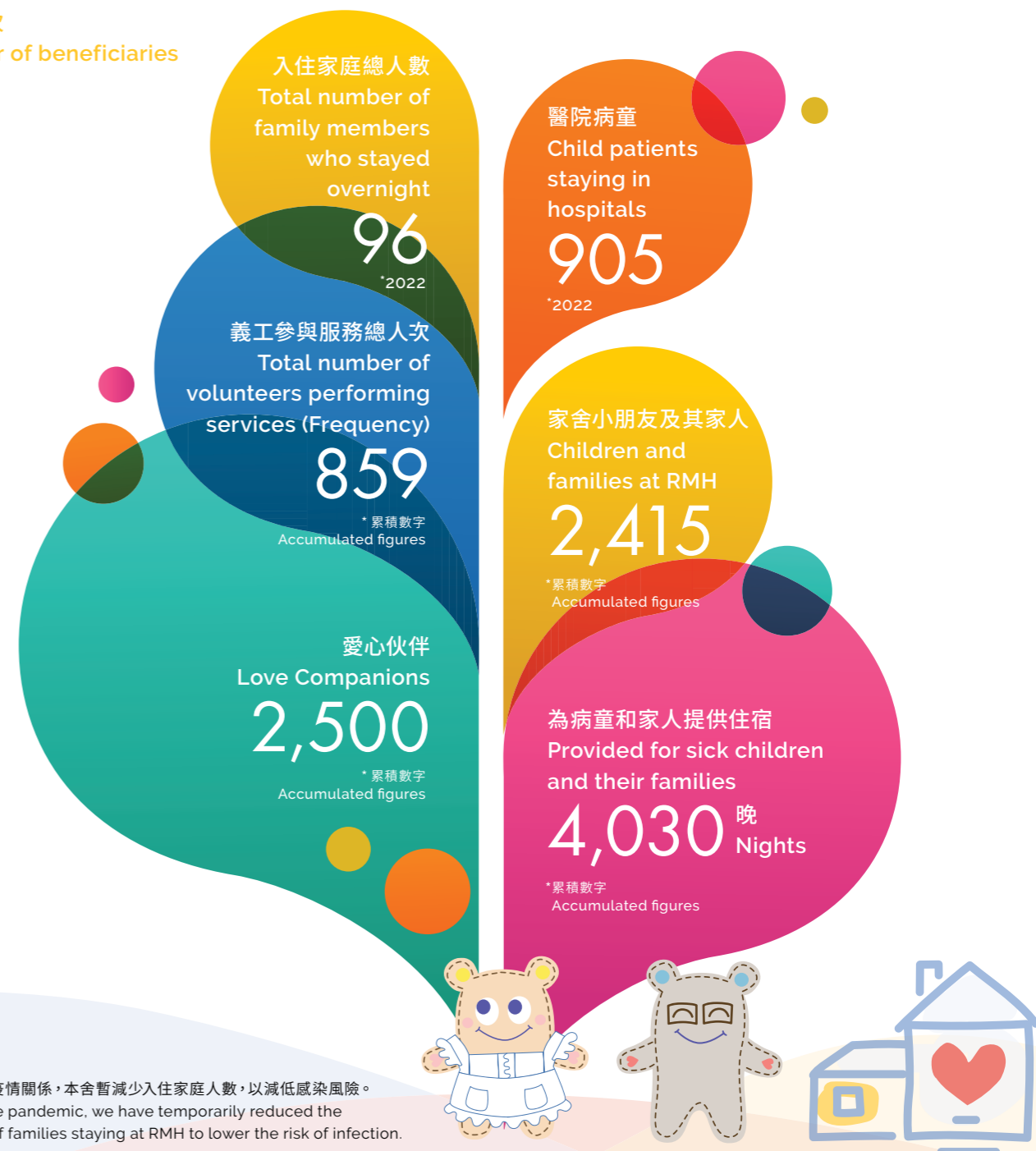
我們的服務與成效

OUR SERVICES & IMPACT

2022年工作總結 Our year in 2022

2022年，香港麥當勞叔叔之家慈善基金繼續為病童家庭提供一個「家以外的家」，在我們的支援下，讓他們在治療路上獲得一個可團聚及歇息的安居之所。
In 2022, the RMHC Hong Kong continued to provide a sanctuary of "home-away-from-home" to families with sick children to recharge, reunion and relief.

受惠人次 Number of beneficiaries



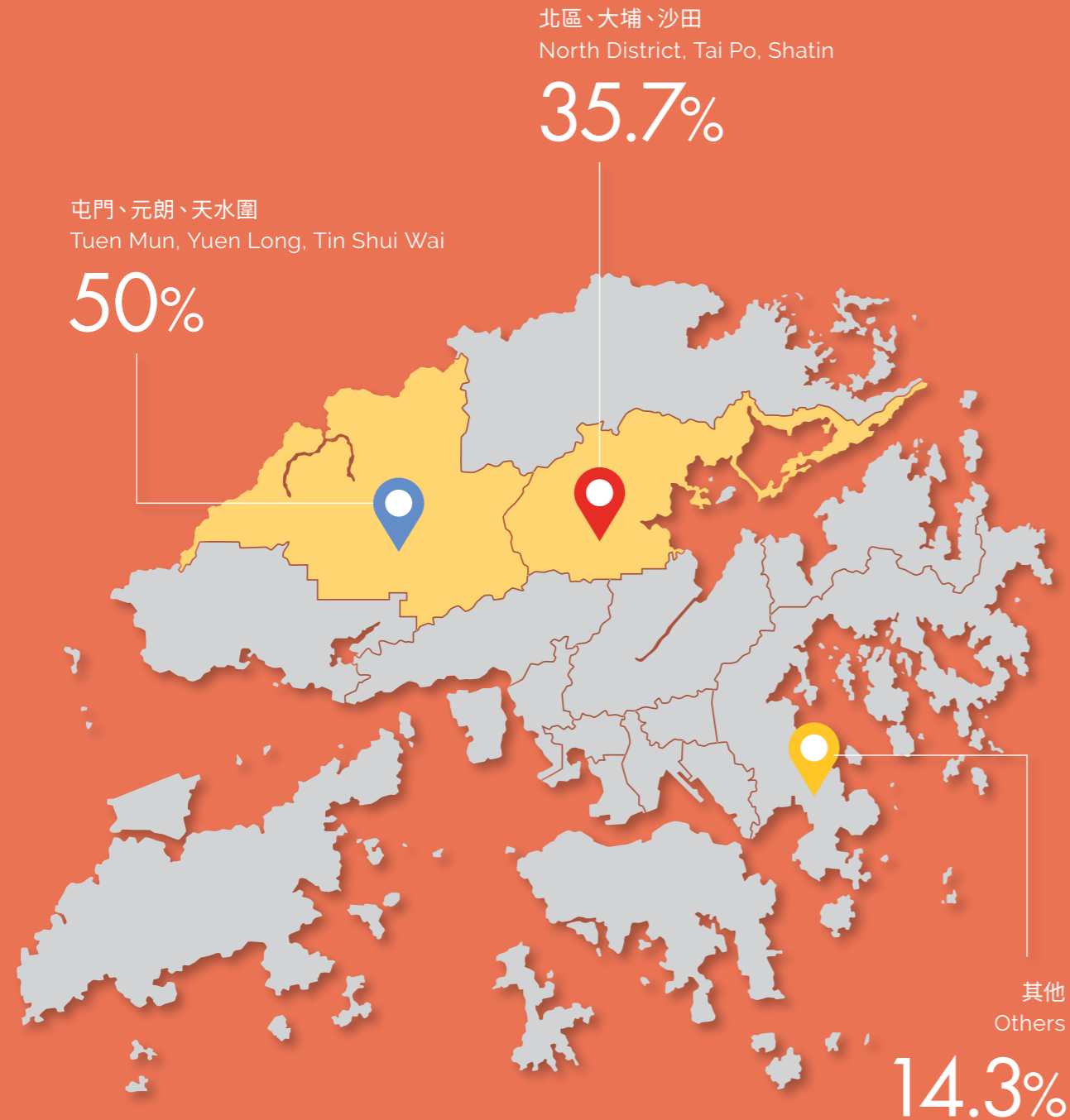
*由於新冠疫情關係，本舍暫減少入住家庭人數，以減低感染風險。
*Due to the pandemic, we have temporarily reduced the number of families staying at RMH to lower the risk of infection.

我們的服務與成效

OUR SERVICES & IMPACT

入住家庭居住地區

Where our families are from

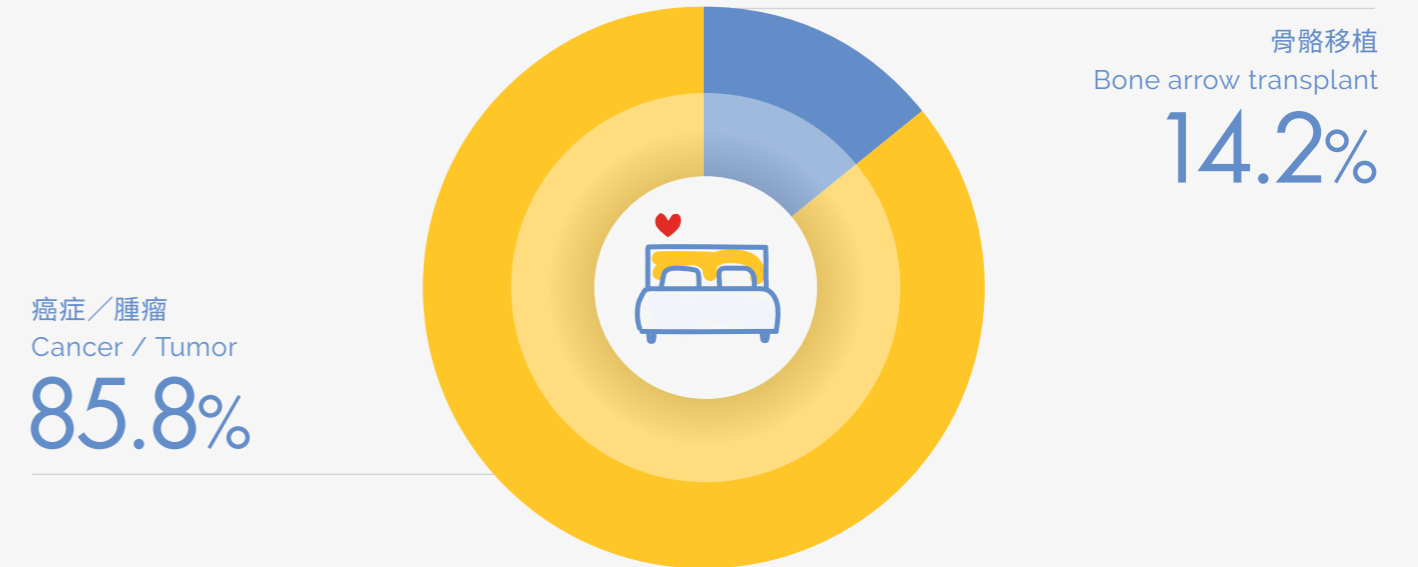


我們的服務與成效

OUR SERVICES & IMPACT

入住病童病症統計

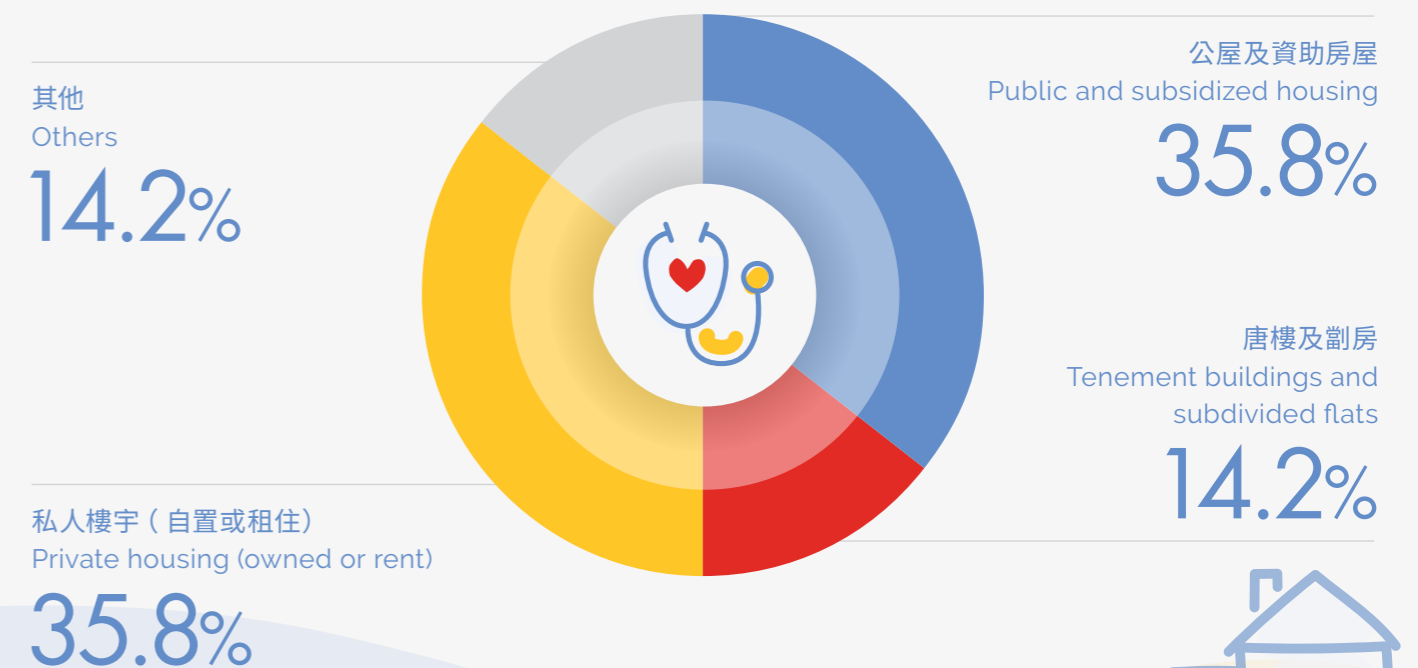
Patient Diagnosis



*由於新冠疫情關係，本舍暫減少入住家庭人數，以減低感染風險，因此入住病童的病症種類亦相對減少。
Due to the pandemic, we have temporarily reduced the number of families staying at RMH to lower the risk of infection; thus, the types of illnesses among patients who are staying have also decreased.

入住家庭的住屋狀況

Housing Type



研究調查 SURVEY FINDINGS

重病兒童父母面對的壓力及社會支援調查 Study on Parental Stress and Social Support Needs in Families with Severely Ill Children

調查發現曾經有子女患有重病的家庭，普遍十分支持「以家庭為本」相關的服務
Parents of seriously ill children generally support "Family-centered care" services



黃馮慧芷女士(中)、陳志峯教授(右)及黃婷婷女士(左)公布「重病兒童父母面對的壓力及社會支援調查」結果
Ms. Grace Fung Oei Wai Chi (middle), Professor Godfrey Chan Chi Fung (right), and Ms. Iris Wong Ting Ting (left), present the findings of a study on pandemic-related parental stress in families with severely ill children

作為全港唯一提供「以家庭為本」服務的非牟利機構，並為患嚴重疾病兒童及其家人提供「臨時家園」，香港麥當勞叔叔之家慈善基金於2022年底進行一項「重病兒童父母面對的壓力及社會支援調查」。調查發現子女患有重病的家庭，普遍十分支持「以家庭為本」相關的服務，若能加深公眾對「以家庭為本」的認識，有助改善香港兒童的福祉，特別是重病兒童。此外，在治療過程中推廣「以家庭為本」服務能加深對服務的認知，對支持慈善基金進一步減輕公營醫療的負擔有著莫大的幫助。

此調查分別以問卷方式訪問了153名現時及曾經入住香港麥當勞叔叔之家的病童家長，及以問卷和面談方式訪問了502名育有一名或以上子女的家長，探討重病兒童父母作為照顧者所面對的種種壓力，及其對社會支援的期望。調查發現，曾經有子女患重病的家庭較渴望得到由慈善團體提供鄰近醫院的暫住服務(51%)、往返醫院及居住地點的點對點交通安排(52%)及社交心理上的支援，例如為重病兒童舉辦不同活動(42%)等，與「以家庭為本」的服務涵蓋範圍吻合。

As the only Non-Governmental Organization in Hong Kong providing "Family-centered Care" services and a "home-like temporary residence" for families with seriously ill children, RMHC Hong Kong conducted a survey 'Study on Parental Stress and Social Support Needs in Families with Severely Ill Children' in late 2022. The study revealed that parents of seriously ill children generally support "Family-centered Care" services. Increasing awareness and knowledge of "Family-centered Care" can benefit children in Hong Kong, especially those who are seriously ill. In addition, a greater appreciation of "Family-centered Care" in a child's medical journey will also deepen this understanding and can also support RMHC Hong Kong which plays a key role in alleviating the burden on the public healthcare system in Hong Kong.

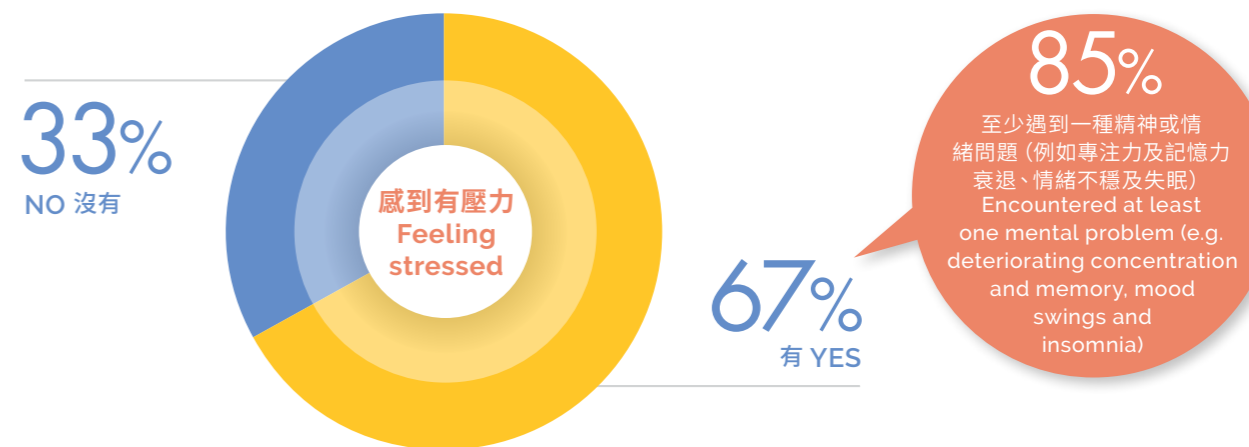
A total of 153 parents with a sick child who are currently staying or have previously stayed at the House of RMHC Hong Kong were interviewed via a questionnaire, while a total of 502 parents from the public with at least 1 child were interviewed. The study explored the pressures faced by parents of seriously ill children and their expectations of support from society. It found out that parents of sick children have a greater need for temporary residential services provided by charities in neighboring hospitals (51%), point-to-point transportation arrangements to and from hospitals and place of residence (52%) and psychological and social support such as the availability of a variety of organized activities for seriously ill children (42%), which matches with some of the "Family-centered Care" services.



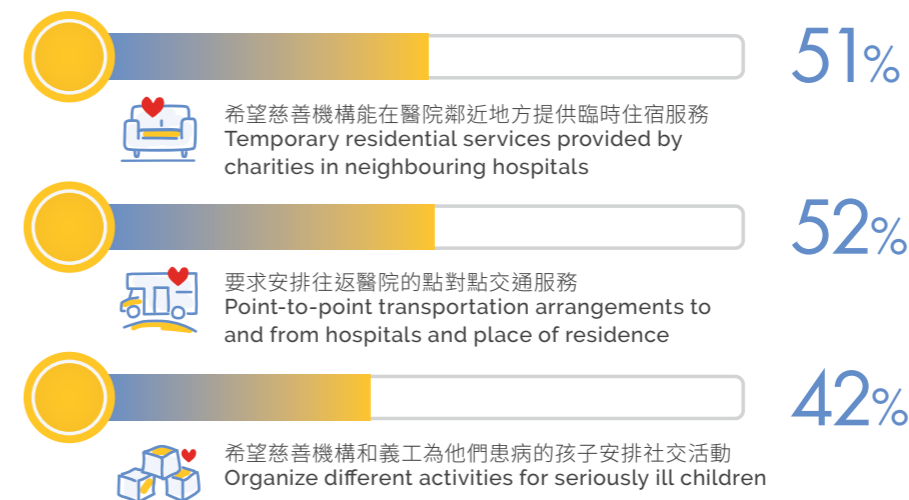
研究調查 SURVEY FINDINGS

重病兒童父母面對的壓力及社會支援調查 (2022) Parental Stress and Social Support Needs in Families with Severely Ill Children (2022)

在過去一年照顧患病孩子時感受到壓力
Incidence of feeling stressed when taking care of sick children in the past year



受訪者需要的支援
Supports that parents with seriously ill children need



壓力處理

香港麥當勞叔叔之家慈善基金董事會成員、香港兒童醫院兒童及青少年科服務主管(血液及腫瘤科)陳志峯教授呼籲病童家長放鬆心情。陳教授表示：「面對疫情，家長無需過份憂慮，隨著社交距離措施放寬，家長和小朋友在做足預防措施下可多參與社交活動，並進行適量的運動，保持身心健康。此外，家長和小朋友應多加溝通，亦可進行一些親子活動，如烹飪、製作手工藝等來紓緩壓力。」

Coping with Stress

Professor Godfrey Chan Chi Fung, Director of RMHC Hong Kong and Service Head (Haematology/Oncology), Department of Paediatrics and Adolescent Medicine, Hong Kong Children's Hospital called on parents of sick children to keep their stress levels in check. Professor Chan said, "There's no need to worry excessively. With the gradual relaxation of social distancing measures, parents and children can participate in more social activities with the right pandemic precautions taken and do moderate exercises in order to stay healthy. Both adults and children should keep communicating. They can also join some family activities such as cooking and doing handicrafts which are great for relaxation and stress relief."



Keeping families close

One day, Jennifer injured her finger at school and the bleeding wouldn't stop. Her family took her to see a doctor, and during the examination, the doctor noticed a small lump on her right hand and blood spots on her neck. The doctor recommended further testing, and soon it was confirmed that she suffered from acute lymphoblastic leukemia.

This was indeed a piece of sad news for Jennifer and her family to accept. The pandemic made taking care of Jennifer even more challenging. Her mother recalled, "Because we had to take care of Jennifer, we had to regularly go to testing centers to get tested for COVID-19, ensuring that we didn't contract the virus. And she couldn't frequently meet other family members. We all felt helpless at that time."

Jennifer and her family, who reside in Ma On Shan, had to take extensive measures to travel to the Hong Kong Children's Hospital in Kai Tak for treatment and follow-up visits. However, in August 2022, they were referred to Ronald McDonald House in Shatin through a medical social worker. When they received the news, Jennifer's mother immediately felt a sense of relief washed over her.

"It feels more reassuring because Jennifer can stay in a comfortable and clean environment to recuperate," her mother said.

Jennifer's mother also pointed out that Ronald McDonald House provides a shuttle bus service between the accommodation and the hospital, greatly reducing the child's exposure to the external environment and minimizing the risk of infection. This allowed her to be with Jennifer and have a family life together during her recovery period staying at the House.

"During the pandemic, we don't have to worry about arranging daily necessities because the House provides masks, testing kits, food, groceries, and toilet paper, among other things. This reduces the need for parents to go outside and greatly decreases the risk of infection. It's a very thoughtful and considerate practice," she said.

Now that Jennifer's condition has stabilized, she still needs to go to the hospital every month for regular medication and observation. We wish Jennifer a speedy recovery and a happy life with her family.

在一起就是家

有一天，熙媛在學校裡弄傷了手指，因流血不止，家人便帶她看醫生，在診症的過程中醫生發現她右手有小腫塊，頸部亦有血點，於是建議她接受進一步的檢查，不久便證實她患上了急性淋巴白血病。

這個消息確實令熙媛和家人難以接受，而疫情令照顧病患中的熙媛變得百上加斤，熙媛媽媽憶述說：「因為要照顧熙媛，我們都必須要經常前往檢測中心作核酸檢測，確保沒有患上新冠肺炎；而她又不可以與其他家人經常見面，大家當時都很無奈。」

居住於馬鞍山的熙媛一家，每次都要做足防疫措施，長途跋涉地前往位於啟德的香港兒童醫院接受治療和覆診。後來於2022年8月，經由醫務社工的轉介下入住沙田的麥當勞叔叔之家。當得知此消息後，熙媛媽媽即時放下心頭大石。

「感覺是比較安心的，因為熙媛可以住在舒適及清潔的環境中養病。」熙媛媽媽說。

熙媛媽媽又認為麥當勞叔叔之家提供穿梭巴士來往家舍及醫院，大大減少病童接觸外界環境，減低感染機會，讓她可以在熙媛養病期間與她一起過家庭生活。

她續說：「在疫情期間，我們都不用擔心如何張羅日常生活的必需品，因為家舍提供口罩、檢測包、食物、日用品及廁紙等，減少家長外出，大大降低感染的機會，是非常貼心周到的做法。」

現在熙媛的病情已穩定下來，不過仍需每月定期回醫院進行藥物治療及觀察。我們祝福熙媛早日康復，與家人一起過幸福的生活。

把握機遇 Transforming challenges into opportunities

疫症為世界帶來種種改變，其影響更是持久的；其中數碼應用已成為生活中不可或缺的一部份。香港麥當勞叔叔之家慈善基金順應這股趨勢，於2022年以創新的意念，舉辦多個網上籌款活動，同時與不同機構建立具意義的合作關係，共同為病童家庭提供支援。

The pandemic has changed the world, and its effect will last. One of which is digitalization which has become an integral part of our daily lives. Tapping into this trend, RMHC Hong Kong introduced some ground-breaking virtual fundraising ideas in 2022 while establishing some meaningful partnerships for our good cause.



才華綻放：「小小才藝表演2022」

我們深信，當孩子獲得欣賞、愛和指導時，他們便能夠充分發揮潛力。「香港麥當勞叔叔之家：小小才藝表演2022」為此給小孩子創做了一個舞台，讓他們把自己的興趣變成夢想，用自己的努力站上舞台，以表演的形式綻放異彩。

由舞蹈、烹飪、藝術到寵物表演（如訓練狗隻）等，參與「小小才藝表演2022」的孩子們有些仍在治療階段，有些則已康復過來，藉著表演向大家展示無比的勇氣與信心，值得鼓勵和讚賞。

有賴各位善長人翁、協作機構和場地贊助的鼎力支持，讓孩子們能與知名人士演出，並將才華透過網上平台向世界展現。

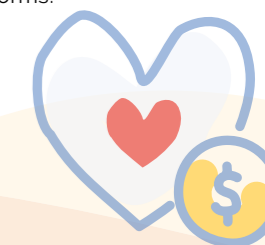


Expressing talents at RMHC Hong Kong's Got Talent Show 2022

We believe children's full potential can be reached when they receive appreciation, love and guidance. The RMHC Hong Kong's Got Talent Show 2022 created a perfect platform for our little performers to shine on stage.

From dancing, cooking, arts to pet shows (dog training) and more, the RMHC Hong Kong's Got Talent Show 2022 showcased the inspirations and bravery of children who were still battling life-threatening diseases at our House or recovered.

Thanks to the support from our valuable donors, partners, and venue sponsors who enabled us to create a stage for the children to perform with celebrities and at venues where they can showcase their talents to the world through online platforms.



結合傳統與創新的籌款活動

MAINTAINING STABILITY AND CONTINUITY: FUNDRAISING EVENTS



奇妙的聖誕

每年的聖誕節，琳瑯滿目的節日燈飾與佈置讓我們盡情感受節日的氣氛，同時也提醒我們聖誕節是關於分享和愛。

2022年，香港麥當勞叔叔之家慈善基金度過了一個愉快又充實的聖誕節。作為「童」心頌聖誕—「1881」聖誕啟動禮2022暨慈善表演的協辦及受惠機構，我們「愛心伙伴」計劃裡的康復兒童及家庭很榮幸能參與位於尖沙咀1881 Heritage舉行的啟動禮，於現場欣賞耀目聖誕燈飾。此外，參與我們「香港麥當勞叔叔之家：小小才藝表演2022」的小孩子更於當日與歌手JW同台合唱聖誕歌，將聖誕歡樂帶給大家。

Making Christmas magical

Every Christmas, the dazzling array of displays in the city engages us in enjoying the festivities as much as we can, it also reminds us that it's time for giving and love.

The Christmas in 2022 was filled with excitement for RMHC Hong Kong. As the co-organizer and one of the beneficiaries of "A Christmas Wish Under the Mistletoe at 1881 Heritage", recovered children and their families of the Love Companion program, took the pleasure of partaking in the kick-off ceremony at 1881 Heritage, Tsim Sha Tsui and were mesmerized by the glittering lights illuminating the city. The occasion also served as a stage for our little performers of RMHC Hong Kong's Got Talent 2022 to unleash their potential and serenade Christmas carols along with singer JW.



網上慈善獎券義賣

今年，我們以不一樣的 forms，慶祝第22屆麥當勞叔叔之家慈善基金慈善獎券義賣。星級義工隊長歌手謝安琪帶領一眾「愛心伙伴」的康復兒童，透過網上互動，呼籲廣大市民慷慨解囊。感謝各界的協助與支持，為期兩個月的網上慈善獎券義賣活動取得理想成績，合共籌得57萬港元。

Online raffle fundraiser

RMHC Hong Kong's Charity Raffle Ticket Sales celebrated its 22nd anniversary with an out-of-the-box style. Conducting it online and with a star-studded volunteer team led by team leader, celebrity Kay Tse and our children the Love Companion program, the two-month event successfully raised HK\$570,000. Thank you for all the generous support to help us accomplish amidst the pandemic.



慈善高爾夫球賽2022

慈善高爾夫球賽是麥當勞叔叔之家慈善基金一項悠久的傳統，每年全球不同的分會都會舉行。而香港的慈善高爾夫球賽亦已有20多年的歷史，成功將運動的樂趣融入我們有意義的工作中。

今年慈善高爾夫球賽於8月15日假粉嶺香港高爾夫球會舉行，疫情下獲得不少熱心的贊助者和熱愛高爾夫球的善長參與。感謝TMS協辦活動，支持籌集善款，讓更多有需要的家庭能夠受惠於「家以外的家」的服務。

Staying active – Charity Golf Tournament 2022

The charity golf tournament is a long-standing tradition of RMHC around the world and for over two decades, RMHC Hong Kong's Golf Tournament has been running successfully integrating the fun of sports into our meaningful cause.

We held our annual charity golf tournament on 15 August 2022 at The Hong Kong Golf Club in Fanling amid the pandemic. It was a great get-together occasion with participants including our committed supporters who share our vision of improving the lives of families with seriously ill children. Together with our co-organizer, The Marketing Store, we were able to raise much-needed funds to support our provision of "home-away-from-home" services for families in need.



善行之舉：義工服務

ACTS OF KINDNESS: VOLUNTEER HEROES

以愛與善行建立的社區

A community built through giving

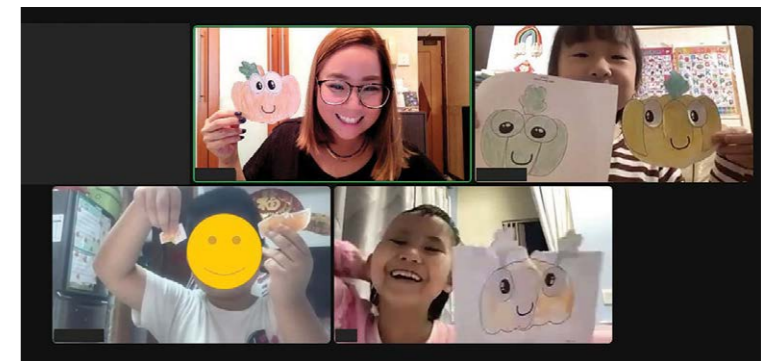
疫情期間，無私的義工成為支援我們病童家庭的重要支柱。 In face of adversity, selfless volunteers have become the beacons of hope, providing essential support to our families with sick children.

儘管於2022年底社交距離措施有所放寬，家舍繼續實施停止探訪的措施，以保障家舍的病童和其家人的健康免受任何風險。

充實的學習生活

為了維持家舍的兒童在疫情期間仍然可以過健康的學習和社交生活，我們邀請義工老師為入住家舍和「愛心伙伴」計劃的兒童（「愛心伙伴」即曾經入住家舍的小朋友及其家人）提供線上興趣班和英語課程。

最受歡迎的老師之一 Samantha不僅提供線上小組課程，而且還專門為有學習困難的孩子提供一對一的線上英語課堂。她在課堂上很注重紀律，目的是為了要孩子遵守秩序，讓他們康復後能盡快適應正常的學校生活。



當問及Samantha為何積極參與義教工作時，她毫不猶豫地回答：「原因很簡單，因為我所做的一切讓孩子們感到快樂。」孩子們的進步成為Samantha義教的動力，她甚至向朋友和他們的孩子介紹家舍的義工服務，鼓勵他們以不同的方式支持家舍的病童家庭。

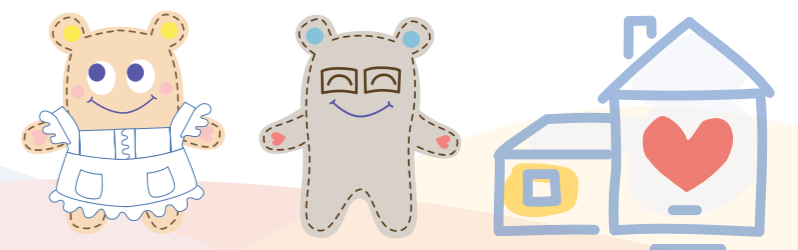
Although social distancing measures were relaxed near the end of 2022, our House continued to impose policy to minimize the contact of our children and families from visitors to protect them from any health risk.

Empowering mind, enriching life

To maintain a healthy social life and learning environment, we invited teachers to conduct online interest classes and English lessons to children who are staying at our House and those of the Love Companion program (children and their family previously resided in our House).

One of our favorite teachers Samantha not only provided online group classes, she also dedicated her time to give one-on-one online English lessons to children with learning difficulties. She emphasized on maintaining discipline during class because she wanted the children to be obedient, so that they can adapt to normal school life easier after they recover and return to school in the future.

When asked about the reasons for her motivation in voluntary teaching, "It's quite simple. It's because all I have done have made the children feel happy." Samantha replied without hesitation. Every progress of our children has inspired Samantha, and she even introduced the services of the House to her friends and even to their children, encouraging them to support the families of the sick children in the House in different ways.



善行之舉：義工服務

ACTS OF KINDNESS: VOLUNTEER HEROES



以行動表達謝意

國際義工日定於每年12月5日，目的是為表揚和認可全世界義工寶貴和無私的貢獻，突顯他們的成就，並鼓勵其他人積極加入義工行列，為世界帶來正面的改變。

為了響應2022年國際義工日，家舍邀請義工製作手掌印畫，向患病兒童及他們的家人打氣。義教老師Samantha亦獲邀創作手掌印畫，她更在掌印上寫下了「我很美麗！」四個字，希望藉此提升患病孩子的自信。

此外，我們還在2022年以Zoom派對的形式舉行了教師答謝日，邀請入住我們家舍的孩子們為網上課堂的義工老師繪製感謝卡，答謝他們奉獻的精神和時間。

感謝義工們的付出和努力，讓病童和他們的家人都可以在臉上掛上會心的微笑。

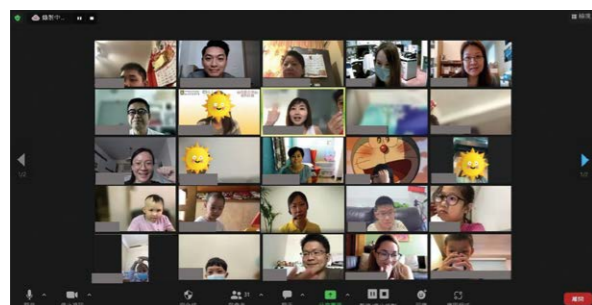
Gratitude in action

International Volunteer Day is an annual celebration falls on 5 December every year. It is a day dedicated to honoring and recognizing the invaluable contributions of volunteers worldwide. It is a time to appreciate the selfless acts of volunteers, highlight their achievements, and encourage others to get involved in making a positive difference.

To echo with the International Volunteer Day 2022, the House has invited its volunteers to create palm prints to cheer up the families of the sick children, and Samantha was one of those being invited. She wrote the words "I am beautiful!" on the palm prints, inspiring the sick children to be confident with themselves.

Besides, we also organized a Teacher Appreciation Day in 2022 in the form of a Zoom party, inviting children staying at our House to draw thank you cards to volunteer teachers, thanking them for their dedication and time in offering volunteer-led virtual classes to them.

From heart to smiles, we are thankful to all our volunteers whose selfless works have brightened the faces of our sick children and their families.



善行之舉：義工服務

ACTS OF KINDNESS: VOLUNTEER HEROES

付出就是最好的回報

抗疫愛心包在疫情期間發揮著至關重要的作用，為社會上有需要的人士提供生活必需品、減輕他們的經濟負擔、促進健康和衛生，以及提供情緒支援等，確保他們在疫情期間仍能獲得生活上的保障。

關注家舍的病童家庭和「愛心伙伴」的身心健康都是我們首要的工作。我們除了確保家舍內所有家庭都獲得足夠的物資和日常生活用品，亦為「愛心伙伴」的家庭提供抗疫愛心包，包括口罩、快速抗原檢測試劑、消毒用品和食物，確保他們在疫情期間保持健康及衛生，同時得到足夠的營養。

Giving is rewarding

Care packages play a vital role in supporting the community during the pandemic by providing daily necessities, alleviating financial burdens, promoting health and hygiene, as well as offering emotional support. They are essential in ensuring that proper support and resources are provided to help Love Companions navigate through these challenging times.

The health and well-being of our families staying in the House and our Love Companions are always the priority of our concern. While we have been keeping our families in the House sufficiently supplied, our Love Companions were also regularly provided with care packages comprising of face masks, RAT kits, sterilizing products and food, so that they could maintain health, hygiene and nutrition over the course of the pandemic.



善行之舉：義工服務

ACTS OF KINDNESS: VOLUNTEER HEROES



聖誕傳愛心

聖誕節是代表愛、關懷、分享和團聚的最佳節日之一。可惜受疫情影響，前往醫院探病都要遵守嚴格的防疫措施，就算適逢聖誕佳節，住院的病童亦不能時常與家人共聚一起。

我們在2022年的聖誕節，特別向香港兒童醫院、威爾斯親王醫院、東區尤德夫人那打素醫院、瑪嘉烈醫院、伊利沙伯醫院、瑪麗醫院、將軍澳醫院、屯門醫院及基督教聯合醫院派發超過700套聖誕「家Fun熊」繪畫禮品包，希望於兒科病房留醫的病童也能在聖誕節裡感受節慶的喜悅。

Christmas Special

Christmas is one of the best holidays that represent love, caring, sharing, and being together. However, when hospital visit has been limited under strict safety measurements, sick children staying at the hospitals could not spend much time with families in the special seasons of the year.

To extend our care to these sick children staying at the paediatric wards, we sent out over 700 Christmas "Caring Teddy" drawing kits to Hong Kong Children's Hospital, Prince of Wales Hospital, Pamela Youde Nethersole Eastern Hospital, Princess Margaret Hospital, Queen Elizabeth Hospital, Queen Mary Hospital, Tseung Kwan O Hospital, Tuen Mun Hospital and United Christian Hospital, hoping sick children could experience the festive joy in Christmas time.



新觀塘家舍的進程與展望

PROGRESS & PROSPECT: OUR NEW KWUN TONG HOUSE

乘風破浪 Keep moving towards the goal

儘管疫情帶來諸多挑戰，新觀塘家舍的興建進度和發展仍取得多個里程碑。
Multiple milestones were achieved by the new Kwun Tong House despite a raft of challenges brought by the pandemic.

2022年，疫情持續升溫，對我們生活各方面造成影響。儘管如此，我們仍盡一切努力實現新觀塘家舍的落成。

重要里程碑

香港麥當勞叔叔之家慈善基金承蒙香港賽馬會慈善信託基金贊助興建新家舍，所有建築工程於2022年竣工，標誌著香港麥當勞叔叔之家慈善基金在實現擴展家舍的宏大願景上向前邁進一大步。歷經近三年的時間和無數個小時的努力，我們終於完成了新觀塘家舍的建築工程，亦代表項目進入另一個新階段，達成重要的里程碑。

一個充滿支持和溫暖的家

新觀塘家舍不僅是暫住的居所，更是病童及其家人獲得支持和感受家庭溫暖的庇護所。因此，「家以外的家」是麥當勞叔叔之家建築設計的大原則，而新觀塘家舍的室內設計概念則圍繞「歡樂」和「關懷」兩大元素。

從配色到燈光及建材，新觀塘家舍的設計啟發自大自然，旨在為入住的家庭營造一種平靜和放鬆的氛圍。公共空間對於提高社群福祉，同時加強住客的群體生活意識尤關重要。因此，新家舍將引入共用廚房和洗衣房、家庭圖書館、多功能活動室、音樂室以及遊戲和工藝空間等公共區域，創造一個以人為本的群體生活空間。此外，新家舍的每個角落都佈置了不同的藝術作品，為四周加添色彩。



觀塘家舍的室內設計概念圍繞「歡樂」和「關懷」兩大元素
"Happiness" and "Care" are the two guiding principles for the design of the second House

In 2022, the ongoing outbreak of the pandemic has posed fundamental challenges in almost every part of our lives. Nonetheless, we made every effort to meet major milestones in completing the project.

Completion of the construction phase

2022 was a year of celebration for RMHC Hong Kong. Thanks to the generous support of The Hong Kong Jockey Club Charities Trust, the building work of the new Kwun Tong House is finally completed. From start to finish, it took almost three years and countless hours of hard work, and we finally completed the construction of the project which signified the Kwun Tong House was progressing into the next phase.

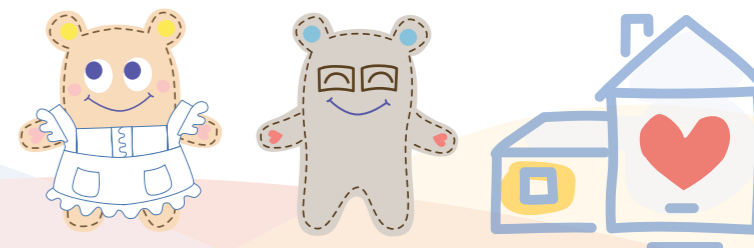
A welcoming sanctuary of support and comfort

The new Kwun Tong House is more than just a place to sleep, but a 'home-away-from-home' that speaks the spirit of RMH. Hence, creating a sense of 'happiness' and a 'caring' place are the two guiding principles for the design of the Kwun Tong House.

From color scheme and lighting to material texture, the nature-inspired design aims at cultivating an atmosphere of peace and relaxation for the families who reside at our House. Communal space is essential for enhancing human well-being as it encourages a sense of community among residents. Thus, areas such as podium floor kitchens and a laundry, a family library, a multi-purpose room, a music room, as well as spaces for play and arts and crafts will be introduced to create a people-oriented community away from home. Furthermore, a pop of color can be found at every corner of the House with a series of artworks.



麥當勞叔叔之家（觀塘）賽馬會大樓
RMHC (Kwun Tong) Jockey Club Building



新觀塘家舍的進程與展望

PROGRESS & PROSPECT: OUR NEW KWUN TONG HOUSE



互動投影遊戲有助小孩腦部及身體發展
Interactive projector games help stimulate the brain and body

寓學於樂促進病童康復

患病兒童往往要面對不同的挑戰和壓力。為了給病童創造一個快樂和關懷的生活環境，我們將寓學於樂的遊戲帶到新觀塘家舍，希望孩子們可從玩樂中獲得學習的機會。

互動投影遊戲有助促進兒童的身心發展。有見及此，我們會於新觀塘家舍引入多個互動投影遊戲系統，讓我們的孩子寓學於樂，提升對學習的興趣。

玩具能提升小朋友的專注力及解決問題的能力。因此新家舍裡將添置玩具鐵路、航空模型及積木等，一些較受孩子歡迎的玩具，既可幫助他們發展創造力，同時也是可以與家人一起參與的活動。



大型模型火車將成為家舍共用空間的焦點
A large-scale model train set will become a highlight for the communal area of the new House

實踐綠色生活

綠意盎然的生活空間，有助療愈身心。新家舍將引入大量綠色植物，同時把低碳的綠色生活融入環境中。

良好的室內空氣品質可保障住客的健康和福祉，這對我們的新家舍尤其重要。我們已為家舍大樓安裝一系列空氣淨化系統，過濾室內空氣污染物，以保持環境清潔。在建築設計上，我們亦正積極申請可持續建築認證及能源認證，希望每個入住的家庭都可在健康又環保的空間裡生活。

香港麥當勞叔叔之家新觀塘家舍預計於2023年第四季度投入服務。

新觀塘家舍概覽 New RMH at a glance

家庭客房數目 Rooms	66
同一時期可容納入住人數 Accommodation capacity at the same time	260
特殊需要房間數目 Special-needs rooms	6
每年為病童家庭提供多少晚住宿 Nights provided to families and children each year	24,000

Edutainment is key to healing

Coping with illness is often challenging and stressful for children. A few initiatives will be introduced to provide a blend of entertainment and educational content that are tailored to the needs and interests of our children.

Interactive projector games help promote children's physical and mental development. Several systems will be introduced to engage our children in a completely entertaining and learning experience with an injection of fun.

Toys can stimulate concentration levels and improve problem-solving skills, hence toy railways, aviation models, and building blocks will be brought to our House as they are often the favorite toys among children since they also help them develop creativity, whilst they are activities families can work on together.

Green practices

Green space can lower the levels of stress. Plenty of green plants will be introduced whilst low-carbon living practices will be incorporated into the new House.

Good indoor air quality is essential to safeguarding the health and well-being of the building occupants. It is particularly crucial to our House. A series of air purifying systems were installed in the building to filter indoor air pollutants and to keep our environment clean.

We were actively applying for green building and energy certifications as an affirmation of our will to deliver a healthy and environmentally friendly environment to our families.

The new Kwun Tong House is expected to commence service in Q4 of 2023.

不可或缺的支持

INVALUABLE SUPPORT



維繫家庭，以幫助孩子更好地面對及獲得治療。
Keeping families together to help kids heal and cope better.

創始使命伙伴 — 麥當勞

FOUNDING MISSION PARTNER — McDONALD'S



香港麥當勞 — 為社會帶來美食與愛心

2022年對香港麥當勞來說是充滿挑戰的一年，在餐廳營運仍受新冠疫情影响之際，香港麥當勞作為香港麥當勞叔叔之家慈善基金（慈善基金）的長期伙伴，仍然為基金籌得超過港幣5百萬元善款，幫助病童及其家人之餘，亦提升大眾對慈善基金的認識。

這一年，香港麥當勞除了繼續於全港旗下餐廳設置捐款箱外，更積極透過數碼轉型，例如非接觸式的捐款渠道，支持慈善基金。顧客只需掃描餐廳內的捐款二維碼或於手機或餐廳內的點餐機掃描App內的捐款券，即可捐款，鼓勵App會員一同共襄善舉。

香港麥當勞透過與商業電台的強大伙伴網絡，合作舉辦多項慈善籌款活動，為香港麥當勞叔叔之家慈善基金籌款。麥當勞App用戶只需透過捐款券向麥當勞叔叔之家捐贈港幣\$90.3，即有機會得到一票難求、極具話題性的活動門票，包括《拉闊音樂會 神的拉闊 鄭欣宜 x 盧瀚霆》、《叱咤樂壇Brand New Live生力軍音樂會》、《903 AllStar 籃球賽》、《2022年度叱咤樂壇流行榜頒獎典禮》等門票兩張。

來年，香港麥當勞會繼續貫徹創辦人雷文洛克（Ray Kroc）的格言——「取之社會，用之社會」，與慈善基金並肩同行，為病童及其家人送上愛心和溫暖。



McDonald's Hong Kong – Serving the Community with Food and Love

2022 was a challenging year for McDonald's Hong Kong. While the restaurant operation was still affected by the pandemic, McDonald's Hong Kong, as a long term keen supporter of Ronald McDonald House Charities, Hong Kong (RMHC Hong Kong), raised more than HK\$5 million for RMHC Hong Kong to support sick children and their families, while raising public awareness of RMHC Hong Kong.

This year, apart from setting up RMHC Hong Kong donation boxes in all its restaurants in Hong Kong, McDonald's Hong Kong also fully supports RMHC Hong Kong through digital transformation such as contactless donation channels. Customers can support RMHC Hong Kong directly by scanning the donation QR code in all McDonald's restaurants or the donation coupons via McDonald's App and self-ordering kiosks, encouraging its app members to share their love with the community.

Leveraging the strong partnership network with Commercial Radio Hong Kong, McDonald's Hong Kong has stepped forward to launch various fundraising campaigns for RMHC Hong Kong. With HK\$90.3 donation, app members could have a chance to get two tickets of exclusive talk-of-the-town events "Music is Live Joyce Cheng x Anson Lo", "903 Music Green Sonic Brand New Live", "903 AllStar Basketball Jam", "Ultimate Song Chart Awards Presentation 2022".

Following the motto of Ray Kroc, the founder of McDonald's, "We have an obligation to give back to the community that gives so much to us", McDonald's Hong Kong will continue to walk hand in hand with RMHC Hong Kong and bring love and warmth to sick children and families in the coming years.



感謝各方支持

ACKNOWLEDGMENT OF SUPPORT

擴展家舍 · 拓展希望 Expanding Service, Extending Hope

隨著位於觀塘的新家舍將於2023年年尾投入服務，連同現有的沙田家舍，香港麥當勞叔叔之家慈善基金的營運費用將會大幅增加。我們感謝每一位善長和機構的支持，讓我們可以擴展服務，惠及更多有需要的病童及其家庭。

A new RMH in Kwun Tong will commence service by the end of 2023. Together with the existing Shatin House, it is expected to generate a substantial increase in operating costs to cater to families in need. Thank you for all your donations. They enable us to help many more families with sick children during the most difficult times in their lives.

物品或服務捐贈（機構） Donation-in-Kind (Corporate)

捐贈HK\$50,000或以上 | Donation of HK\$50,000 or above

B. Duck	Luen Hing Hong Building Materials Ltd	Sealy Asia (Hong Kong) Ltd
DCL Logistics China Ltd	MHK Restaurants Ltd	SF Express Hong Kong Ltd
ECOLAB	New World Development Co Ltd	The Hong Kong and China Gas Co Ltd
Hong Kong Kit Leung International Trading Ltd	Prime Credit Ltd	
Kin Can Cultural Enterprise Co Ltd	New Island Printing	

捐贈HK\$10,000至HK\$49,999 | Donation of HK\$10,000 to HK\$49,999

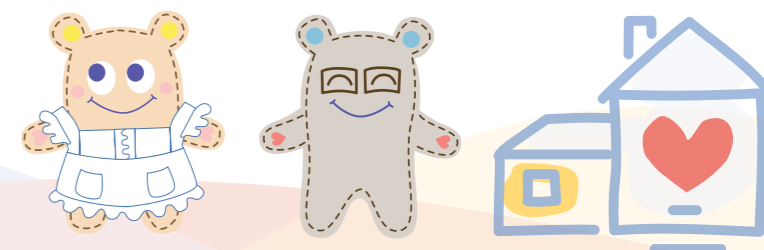
Bliss & Bless	Foodlink Foundation Ltd	Oveco Industries Ltd
Coca-Cola China Ltd	Hasbro Far East Ltd	Hong Kong Red Cross AU32
Chows Hong Kong	Hyatt Regency Hong Kong, Sha Tin	Starluxe IT Co Ltd
Combine Will Industrial Co Ltd	JC Penney	Swire Coca Cola HK
Danny Chan (HK) Fans Club	Lions Club of Hong Kong Centennial Passion	Tsit Wing Coffee Co Ltd
First Initiative Foundation	Lions Club of West Kowloon Ltd	

捐贈HK\$5,000至HK\$9,999 | Donation of HK\$5,000 to HK\$9,999

Anytime Catering	Jubilee International Tour Ltd	Sunwa Marketing Co Ltd
China Investment Fund Co	Keyhinge Toys (China) Ltd	
Goldenpin International Ltd	Sunshine Action	

捐贈HK\$1,000至HK\$4,999 | Donation of HK\$1,000 to HK\$4,999

AM 730	Innisfree	Ocean Park
City Chamber Orchestra of Hong Kong	Jumpin Gym U.S.A.	On Kee Seafood Co Ltd
CheckCheckCin Ltd	LEGO Hong Kong Ltd	Oxford University Press
E Club Club	Magic Clean Environmental Services Ltd	Shang Healthcare Ltd
Everything Organic Ltd	Mameshare	The Peninsula Hong Kong
Gin Lee Fan Club	Megaman (HK) Electrical & Lighting Ltd	Tsuen Lee Group (Holdings) Ltd
Green Marketing Ltd	Navis HK Ltd	Wilds Company Ltd
Health Aims	Ngong Ping 360 Ltd	粵豐環保電力有限公司



感謝各方支持

ACKNOWLEDGMENT OF SUPPORT



物品或服務捐贈 (個人) Donation-in-Kind (Individual)

捐贈HK\$10,000或以上 | Donation of HK\$10,000 or above

Cherry Lai	Rebecca Hui	Simon Yip
Doris Choi Sau Lin	Reshma Gopwani	Sorry Law
Grace Fung Oei	Roberta Chow	YY Hung
Karen Cheung Tin Loh	Rohini Chotirmal	麥桂才
Peter Tsang	Ruby T Lo	

捐贈HK\$5,000或以上 | Donation of HK\$5,000 or above

Fan Ka Loy	簡錦嫦	葉馥萍
------------	-----	-----

捐贈HK\$1,000或以上 | Donation of HK\$1,000 or above

Chow Wai Yin	Christy Chan	Ko Yu Chuen
Choy Wing Yu	Ho Kin Tat	Wong Shui Por

小小才藝表演2022贊助 Sponsors of RMHC's Got Talent 2022

捐贈HK\$5,000或以上 | Donation of HK\$5,000 or above

Bentley Communications	Golden Burger (Macau) Food Co Ltd	Por Yen Charitable Foundation
Channy Leung & Peter Tsang	Grace & Kendall Oei	The Garden Co Ltd
Cheung Yeung Ling	Lan Kwai Fong Group	The Marketing Store
China CITIC Bank International Ltd	Manulife	Vervain Resources Ltd
Elkay Interior Systems	MHK Restaurants Ltd	

捐贈HK\$5,000以下 | Donation below HK\$5,000

DDB Worldwide LTD	Elkay Interior Systems	Yau Kwong Yee Kee Engineering Ltd
Desmond Chan	Mayuanda Toys (HK) Co	

機構捐助 Corporate Donors

捐贈HK\$5,000,000或以上 | Donation of HK\$5,000,000 or above

Chen Yang Foo Oi Foundation Ltd	The Chen Wai Wai Vivien Foundation Ltd	The D.H. Chen Foundation
---------------------------------	--	--------------------------

捐贈HK\$1,000,000至HK\$4,999,999 | Donation of HK\$1,000,000 to HK\$4,999,999

Fung Yiu King Charitable Foundation Ltd	Golden Burger (Macau) Food Co Ltd	Sunshine For Life Charitable Trust
---	-----------------------------------	------------------------------------

捐贈HK\$500,000至HK\$999,999 | Donation of HK\$500,000 to HK\$999,999

Walter & Wendy Kwok Family Foundation Ltd		
---	--	--

捐贈HK\$100,000至HK\$499,999 | Donation of HK\$100,000 to HK\$499,999

General Agents And Managers Association Of Hong Kong Ltd	New Island Printing Group Co Ltd	TS Capital Partners Management Ltd
MHK Restaurants Ltd	Philippa A. Vizzone Annual Giving Fund	
	The Marketing Store Worldwide (Asia) Ltd	

捐贈HK\$50,000至HK\$99,999 | Donation of HK\$50,000 to HK\$99,999

Citybase Property Management Ltd	NWS Holdings Charities Foundation Ltd	Wisdom Up Ltd
Mango Mall Ltd	Sun Hung Kai Real Estate Agency Ltd	

捐贈HK\$10,000至HK\$49,999 | Donation of HK\$10,000 to HK\$49,999

Cargill Meats (Thailand) Ltd	Hoyu Tooling Ltd	Pro-Tooling Products Design Ltd
Cheung Kong Property Development Ltd	Hung Hing Printing Group Ltd	Robiff Trading Company Ltd
Combine Will Industrial Co Ltd	Keyhinge Toys Vietnam Joint Stock Co	Sun Hing Printing Co Ltd
Cosmos Team Engineering Ltd	Kingswell Construction & Engineering Co Ltd	Tak Wah Touring Ltd
Dream International Ltd	Lafayette Watch Gallery Ltd	Technical Model Design Ltd
Excel Best Toys Ltd	Manulife (International) Ltd	Three A Surgeons Ltd
Forever Chemers Ltd	Mayuanda Toys (HK) Co Ltd	Wai Hing Ind (HK) Co Ltd
Graceland Entertainment Ltd	Mckey Food Services (Hong Kong) Ltd	Weebo Corp Ltd
Hexon Enterprises Ltd	Nexus Investment Advisors Ltd	Wilds Co Ltd
Hong Kong Health Check & Medical Diagnostic Centre Ltd	ONC Lawyers	
	Por Yen Charitable Foundation Ltd	

感謝各方支持

ACKNOWLEDGMENT OF SUPPORT

個人捐助 Individual Donors

捐贈HK\$1,000,000以上 | Donation of HK\$1,000,000 above

馬津月		
-----	--	--

捐贈HK\$100,000至HK\$499,999 | Donation of HK\$100,000 to HK\$499,999

Agnes Tai Wai Kuen	Keung Admin	陳燕麗
Florence Lee Chieh Ying	Yeung Chui Han	
Karen Cheung Tin Loh	陳子軒	

捐贈HK\$50,000至HK\$99,999 | Donation of HK\$50,000 to HK\$99,999

Chan Yuet Wah	Liz Lam Ling	Tony Cheung Shi Pang
Cheung Chuen Ho	Loh Cheung, Natalie Yuk Pok	

捐贈HK\$10,000至HK\$49,999 | Donation of HK\$10,000 to HK\$49,999

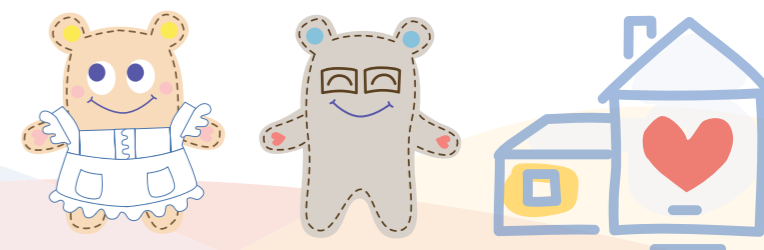
Amy Chan Tsz Shan	Kwok Shek San	Tsang Lai Lun
Aron Harilela Hari	Lam Siu Hung	Tsui Wai Hung
Barbara Rogers	Lau Ka Shi	Vanessa Cheung Tih Lin
Carman Yam Kan Ho	Leung Ting Fan	Winnie Wong Hoi Yee
Chan Ying Yu	Li Kwing Cheung	Wong Chi Long
Cheung Wai Hing	Li Ping Fai	Wong Ho Yin
Cheung Yee Wan	Maggie Wan Ching Lan	Woo Huey Fang
Chiu Bo Lan	Michelle Chu	「幸福玻璃球」黃凱芹
Choi Wang Chi	Mok Wai Mei	鄭欣宜國際歌迷會
Chu Ha Fan	Paul Shih I-Cheng	張偉亮
Colly Wong Yuet Ching	Peter Wong Kun Wah	關學明
Eric Lo Hing Tak	Richard E Lane	李春嬌
Eric Siu Yick Chong	Roberta Chow Chung Hang	梁志聰
Helen Chan	Rolanda Yeung Lai Ka	尹嘉駿
Jackson Nai Kin Cheung	Ronald Kwok	殷浚晞
Jane Curzon Lo	Simon Chan Man You	丘慧英
Jean Ho Ching Kit	So Wai Ling	
Kwan Wai Yuen	Tam Ka Yiu	

特別鳴謝 | Special thanks to

Eaton HK	LAIBA Beverages, Co Ltd	Mars Company Hong Kong Ltd (Kind Hong Kong)
Hong Kong Ballet	Mango Mall (Sun Mobile)	Shatin Hyatt Hotel
Hong Kong Commercial Broadcasting Co Ltd	Mr. Lai Lok Yi	Studio 83

* 支持者眾多，不能盡錄。Thank you to all our supporters including those not on the list.

* 本列表按字母順序排列。The list is arranged alphabetically.



財務資料

FINANCIAL INFORMATION



財務資料

FINANCIAL INFORMATION

香港麥當勞叔叔之家慈善基金 2022年年度業績財務回顧

受到本地疫情所影響，2022年對香港麥當勞叔叔之家慈善基金仍是充滿挑戰的一年。我們努力地實踐使命，在現時擁有23個房間的沙田家舍提供「以家庭為本」的服務。與此同時，我們正積極籌備設有66個房間的觀塘新家舍（「第二家舍」）的服務擴展。儘管香港麥當勞叔叔之家慈善基金的籌款活動仍然受到疫情限制，我們仍不遺餘力地向各界募集捐款及贊助以支持我們的營運和服務擴展。

截至2022年12月31日止年度，綜合收益總額為港幣2,250萬元，較去年的港幣2,790萬元減少了港幣540萬元，主要原因如下：

- 1) 贊助收入減少港幣600萬元（2022年為港幣2,290萬元對比2021年為港幣2,890萬元）。
- 2) 營運開支增加了港幣280萬元（2022年為港幣2,060萬元對比2021年為港幣1,780萬元），主要為招聘高階管理人員以協助推行新的第二家舍發展項目。

展望未來，現有的沙田家舍連同預計於2023年第四季度投入服務的Second RMH，香港麥當勞叔叔之家慈善基金將可為更多重病兒童及其家庭提供服務。屆時香港麥當勞叔叔之家慈善基金的總營運開支將大幅增加，我們將盡力接觸新捐助者，同時保持與現有捐助者的聯繫，以支持我們的服務擴展。

Financial Review of the RMHC Hong Kong's 2022 Annual Results

2022 was again a challenging year to RMHC Hong Kong due to the Covid pandemic. However, we continued to adhere to our mission to deliver good quality "Family-centered care" services in the existing 23-room of RMH in Shatin. Meanwhile, we have been concentrating on the planning and construction of our new 66-room RMH in Kwun Tong ("second RMH"). Fundraising activities of RMHC Hong Kong have again been constrained by the pandemic.

The total comprehensive income for the year ended 31 December 2022 amounted to HK\$22.5 million, compared with HK\$27.9 million last year. The decrease of HK\$5.4 million was mainly attributable to:

- 1) the decrease in sponsorship income of HK\$6.0 million (2022: HK\$22.9 million vs. 2021: HK\$28.9 million);
- 2) the net increase in operating expenses of HK\$2.8 million (2022: HK\$20.6 million vs. 2021: HK\$17.8 million), resulting mainly from the recruitment of experienced management staff members to cater for the opening of the second RMH project.

Looking forward, with the anticipated opening of the second RMH in the fourth quarter of 2023, together with the Shatin house, more seriously sick children and their families can be accommodated because of the large expansion in size of our operation. With the corresponding increase in operating expenses, we have also been working on plans to maximise our outreach to new donors while maintaining relationships with existing ones to ensure that our much larger service is well supported.



財務資料 FINANCIAL INFORMATION



損益及其他綜合收益報表

STATEMENT OF PROFIT OR LOSS AND OTHER COMPREHENSIVE INCOME

截至2022年12月31日止年度	Year ended 31 December 2022	2022 HK\$	2021 HK\$
營運收益	OPERATING INCOME		
公眾捐款	Contributions and donations from the public	10,999,562	9,884,159
籌款活動收入	Income from fundraising activities	4,466,310	4,708,778
獎券義賣	Sale of raffle tickets	372,280	481,240
贊助收益	Sponsorship income	22,915,815	28,930,014
其他營運收益	Other operating income	2,409,736	288,693
		41,163,703	44,292,884
其他收益	OTHER INCOME		
銀行利息收入	Bank interest income	1,874,019	735,838
通過其他綜合收益以公允價值計量的股權投資收益	Dividend income from equity investments at fair value through other comprehensive income	129,980	256,918
政府補貼(附註一)	Government subsidy (Note 1)	480,000	-
外匯溢利淨額	Foreign exchange gain, net	4,821	514
		2,488,820	993,270
營運支出(附註二)	OPERATING EXPENSES (Note 2)		
服務及項目支出	Service and programme expenses	(9,369,420)	(9,003,676)
籌款支出	Fundraising costs	(2,485,146)	(1,451,381)
行政支出	Administrative expenses	(1,545,022)	(1,856,665)
折舊	Depreciation	(2,450,587)	(2,375,871)
香港政府 - 地稅及差餉	Hong Kong Government - rent and rates	(186,640)	(190,120)
項目支出	Project expenses	(4,545,705)	(2,878,652)
		(20,582,520)	(17,756,365)
年度盈餘	SURPLUS FOR THE YEAR	23,070,003	27,529,789
其他綜合收益/(支出)	OTHER COMPREHENSIVE INCOME/(EXPENSES)		
將不會在財政年度完結以後的損益重新分類的其他綜合收益/(支出):	Other comprehensive income/(expenses) that will not be reclassified to profit or loss in subsequent periods:		
以公允價值計量且其變動計入其他綜合收益/(支出)的股權投資:	Equity investments at fair value through other comprehensive income/(expenses):		
公允值的變動	Changes in fair value	(595,689)	393,853
年度綜合收益總額	TOTAL COMPREHENSIVE INCOME FOR THE YEAR	22,474,314	27,923,642

財務資料 FINANCIAL INFORMATION

財務狀況報表

STATEMENT OF FINANCIAL POSITION

於2022年12月31日	31 December 2022	2022 HK\$	2021 HK\$
非流動資產	NON-CURRENT ASSETS		
物業, 設備及器材	Property, plant and equipment	230,756,051	95,366,335
以公允價值計量且其變動計入其他綜合收益的股權投資	Equity investments at fair value through other comprehensive income	-	6,342,809
按金	Deposits	707,430	87,000
非流動資產總額	Total non-current assets	231,463,481	101,796,144
流動資產	CURRENT ASSETS		
其他應收款項	Other receivables	532,855	102,191
預付款項	Prepayments	294,963	228,791
現金及現金等價物	Cash and cash equivalents	138,214,034	152,644,742
流動資產總額	Total current assets	139,041,852	152,975,724
流動負債	CURRENT LIABILITY		
其他應付款項及應計款項	Other payables and accruals	44,060,875	7,430,058
流動資產淨值	NET CURRENT ASSETS	94,980,977	145,545,666
資產總值減流動負債	TOTAL ASSETS LESS CURRENT LIABILITY	326,444,458	247,341,810
非流動負債	NON-CURRENT LIABILITIES		
其他應付款項	Other payables	10,988,523	2,203,212
遞延收益(附註三)	Deferred income (Note 3)	98,144,455	50,301,432
非流動負債總額	Total non-current liabilities	109,132,978	52,504,644
總資產淨值	NET ASSETS	217,311,480	194,837,166
由以下代表	REPRESENTED BY:		
儲備	RESERVES		
公平價值儲備	Fair value reserve	-	3,877,725
限定用途基金(附註四)	Restricted fund (Note 4)	71,334,416	54,380,121
累計盈餘	Accumulated surplus	145,977,064	136,579,320
		217,311,480	194,837,166

附註一:
政府補貼
此款項為香港特別行政區政府在2022年12月31日期間於保就業計劃下提供的工資補貼。截至該報告期末,沒有存在任何未符合領取工資補貼條件的相關事項。

附註二:
所有董事會成員均以義務性質參與,並無收取任何報酬。

附註三:
此款項為香港賽馬會慈善信託基金的撥款,只可用作麥當勞叔叔之家第二家舍的建造和裝修費用。

附註四:
限定用途基金的使用受制於捐助者的指定用途,分別可用於麥當勞叔叔之家第二家舍的營運,或於第二家舍開始經營後用於支持香港麥當勞叔叔之家慈善基金的服務擴展。

附註五:
以上財務資料摘自截至2022年12月31日止年度經審計的財務報表。安永會計師事務所已對2022年財務報表進行了審計並出具了無保留意見,確定該等財務報表已根據香港財務報告準則規定,真實而中肯地反映了香港麥當勞叔叔之家慈善基金的財務狀況,財務表現及現金流量。

Note 1:
Government subsidy
Amount represents the wages subsidy provided by the Government of Hong Kong Special Administrative Region under Employment Support Scheme during the year ended 31 December 2022. As at the end of the reporting period, there are no unfulfilled conditions or contingencies related to these subsidies.

Note 2:
All Board Members work on a voluntary basis and receive no remuneration for their services in supporting RMHC Hong Kong.

Note 3:
Balance represents grants from The Hong Kong Jockey Club Charities Trust, which are solely for the building and fitting-out costs of the Second Ronald McDonald House.

Note 4:
Restricted fund is restricted as to use by the donors for the operation of the Second Ronald McDonald House or for the support of service expansion of RMHC Hong Kong upon the commencement of the operation of the Second Ronald McDonald House.

Note 5:
The above financial information is extracted from the audited financial statements for the year ended 31 December 2022. Ernst & Young has audited the 2022 financial statements and reported on unqualified opinion that the financial statements give a true and fair view of the financial position, financial performance and cash flows of RMHC Hong Kong in accordance with Hong Kong Financial Reporting Standards.

支持我們 SUPPORT US



單次捐款表格 One-off Donation Form



捐款者資料 Donor's Information

公司 / 團體 / 個人名稱

Company / Organization / Name

聯絡人 _____ 先生 / 女士 / 小姐 _____ 職位 _____
Contact Person _____ Mr. / Ms. / Miss. _____ Title _____

地址 _____
Address _____

電話 _____ 傳真 _____
Tel. _____ Fax _____

電郵 _____ 日期 _____
Email _____ Date _____

如收據抬頭與上述公司/個人名稱不同，請註明：

If the name of the receipt is different from the company/personal name, please state:

捐款港幣\$100或以上可申請扣稅。Donations of HK\$100 or above are tax deductible.

捐款金額 Donation Amount

(請在適當方格內加上✓號 Please tick where appropriate)

我願意單次捐款 I would like to make an one-off donation

HK\$5,000 HK\$1,000 HK\$300 HK\$200 HK\$100 其他金額 Others amount HK\$ _____

捐款方法 Donation Method

直接存款或轉賬至「麥當勞叔叔之家慈善基金有限公司」銀行戶口

Direct deposit/transfer to the Ronald McDonald House Charities Hong Kong Limited

渣打銀行	Standard Chartered Bank	447-1-060619-5
匯豐銀行	HSBC	067-450999-292

劃線支票 (抬頭請寫「麥當勞叔叔之家」或「麥當勞叔叔之家慈善基金有限公司」)

Cheque payable to "RMHCHK" or "Ronald McDonald House Charities H.K. Ltd."

支付寶香港 電子錢包

AlipayHK electronic wallet



八達通

Octopus



PayMe



請保留支付寶香港/八達通/PayMe之確認捐款記錄，並電郵或傳真至2947 8780。

Please keep AlipayHK/Octopus/PayMe confirmation payment records and send to us by email or by fax to 2947 8780.

信用卡 Credit Card

(信用卡捐款者可郵寄或傳真此表格至2947 8780。For credit card donation, please send this form to us by mail or by fax to 2947 8780.)

VISA 萬事達咭 Master Card 美國運通 American Express

信用卡號碼 _____ 有效日期至 _____
Credit Card No. _____ Expiry Date _____

持卡人姓名 _____ 持卡人簽署 _____
Cardholder's Name _____ Cardholder's Signature _____

注意事項：所收集的個人資料將保密處理，作為寄發收據及通訊之用。如不欲收取本機構資訊/需查詢/更改個人資料，請與我們聯絡。

Note: The personal data collected will be treated as strictly confidential and will be used only for receipting and other communications with you. If you do not wish to receive any mailings from us, or if you want to have access to or change your personal data, please contact us.

電話 Tel: 2947 8778 傳真 Fax: 2947 8780 電郵 Email: rmh@rmhc.org.hk



香港沙田多石村多石街23號
23 To Shek Street, To Shek Village, Shatin, Hong Kong

香港觀塘有信街 2 號
2 Yau Shun Street, Kwun Tong, Hong Kong

電話 Tel: 852 2947 8778
網址 Website: www.rmhc.org.hk

傳真 Fax: 852 2947 8780
電郵 Email: rmh@rmhc.org.hk



RMHC HK



rmhc_hk



RMHCHK



Ronald McDonald
House Charities
Hong Kong